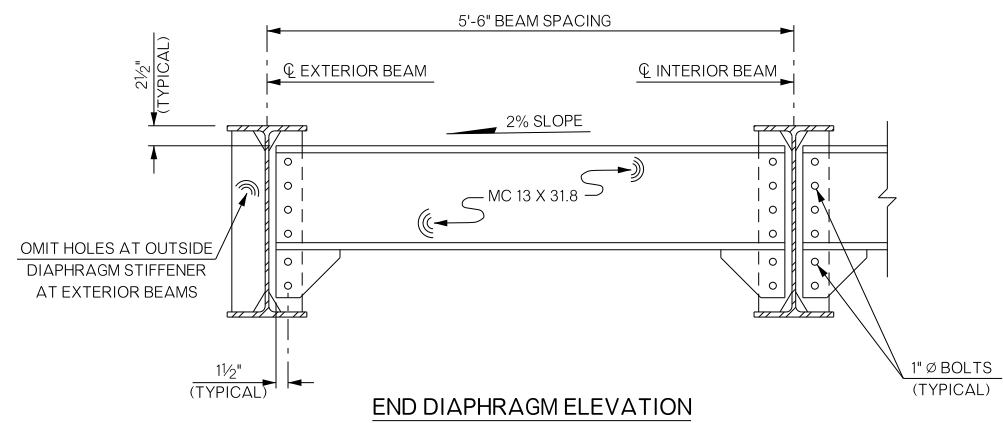
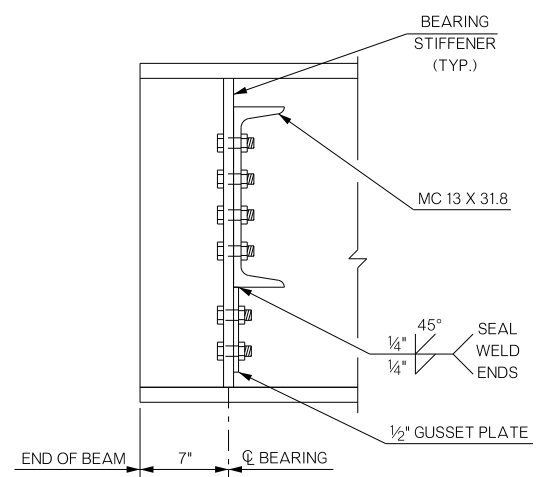


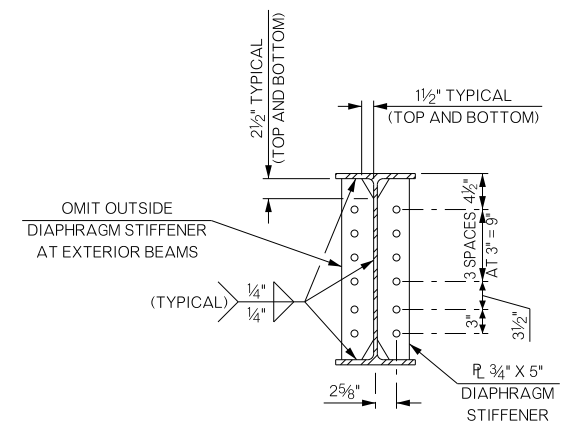
REVISIONS		
REV. NO.	DESCRIPTION	DATE



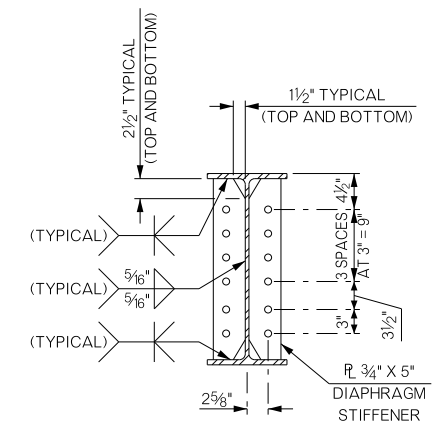
END DIAPHRAGM ELEVATION



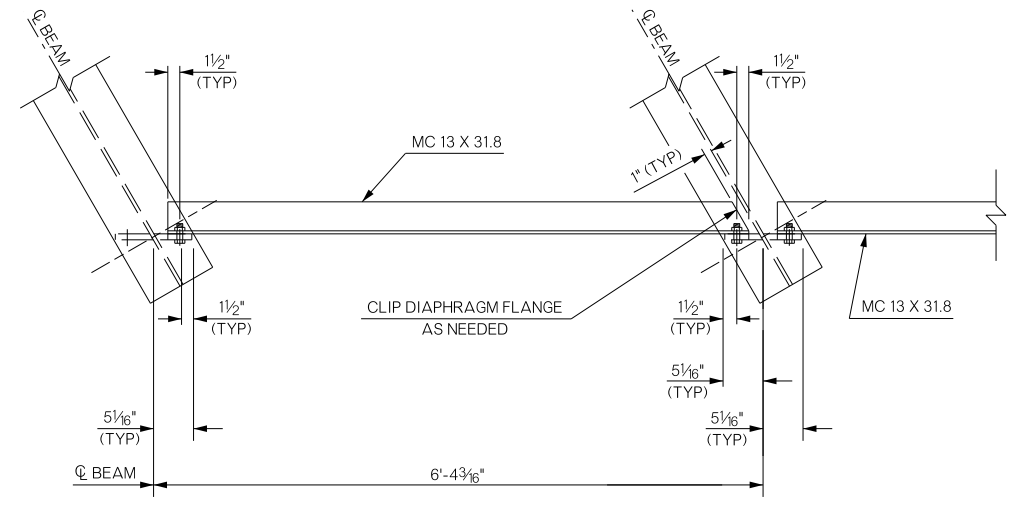
END DIAPHRAGM SECTION



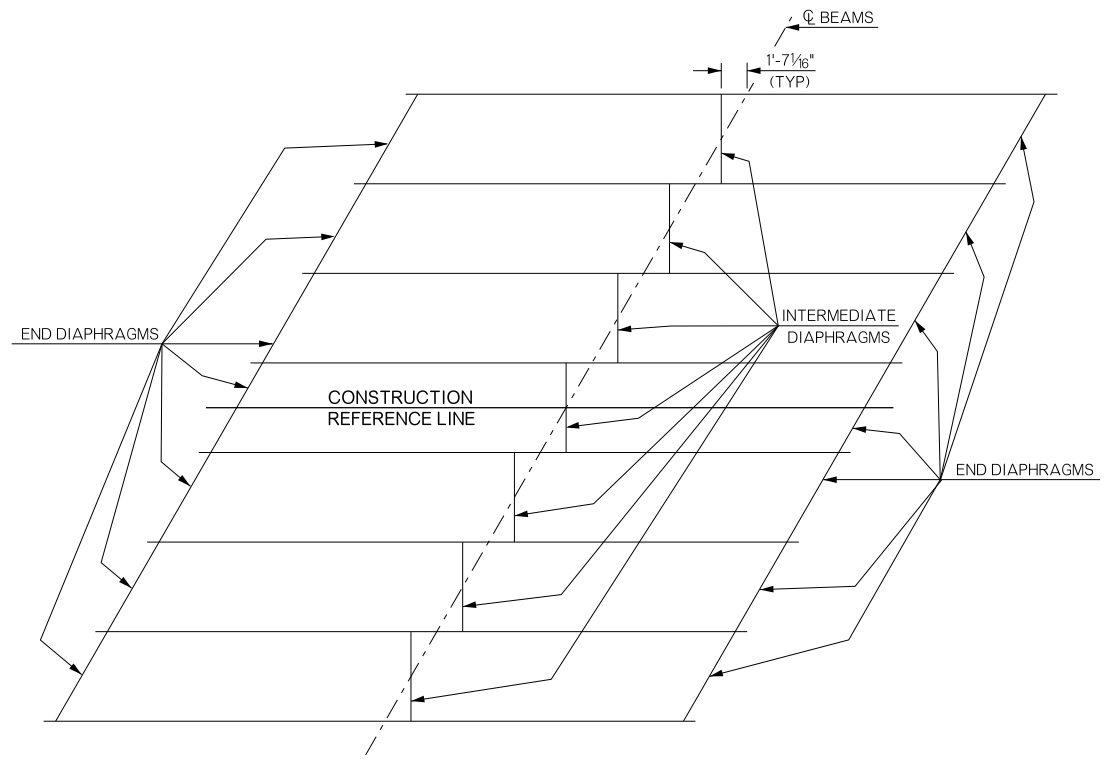
INTERMEDIATE DIAPHRAGM STIFFENER DETAILS



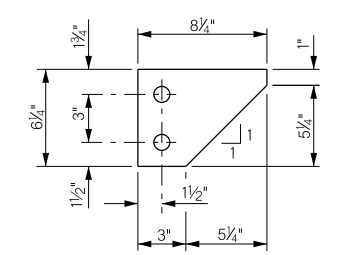
BEARING STIFFENER DETAILS



PLAN OF END DIAPHRAGM



DIAPHRAGM LAYOUT
(TYPICAL FOR EACH SPAN)



1/2" THICK GUSSET PLATE DETAIL

TERMINATE FILLET WELDS ... FROM THE EDGE OF CLIPPED CORNERS OF ALL STIFFENER PLATES AND NON-CLIPPED CORNERS OF INTERMEDIATE DIAPHRAGM STIFFENERS.

THE CONTRACTOR MAY SUBSTITUTE A BENT PLATE DIAPHRAGM IN LIEU OF CHANNEL AND GUSSET PLATE SHOWN AT NO ADDITIONAL COST TO THE DEPARTMENT. PROVIDE 1/2" MINIMUM PLATE THICKNESS FORMED IN THE SHAPE OF THE CHANNEL WITH 4" MINIMUM FLANGES. FABRICATE BENT PLATE DIAPHRAGM TO A DEPTH EQUAL OR GREATER THAN THAT SHOWN FOR THE COMBINED CHANNEL AND GUSSET PLATE.

PROVIDE STRUCTURAL STEEL FOR CHANNEL DIAPHRAGMS AND GUSSET PLATES IN ACCORDANCE WITH AASHTO M270 (ASTM A709), GRADE 50W (WEATHERING STEEL, CHARPY V-NOTCH TESTING NOT REQUIRED). USE BOLTS CONFORMING TO AASHTO M164 (ASTM A325). PROVIDE ALL BOLTS, NUTS, WASHERS AND WELDING WITH WEATHERING CHARACTERISTICS.

BRIDGE "A" SH-78 OVER CHUCKWA CREEK	BRYAN COUNTY	Design	CJO	6/15
DIAPHRAGM DETAILS		Detail	DPG	8/15
		Check	TEE	9/15
STATE OF OKLAHOMA		DEPARTMENT OF TRANSPORTATION		
JOB/PIECE NO. 27912(04)		SHEET NO. B021		